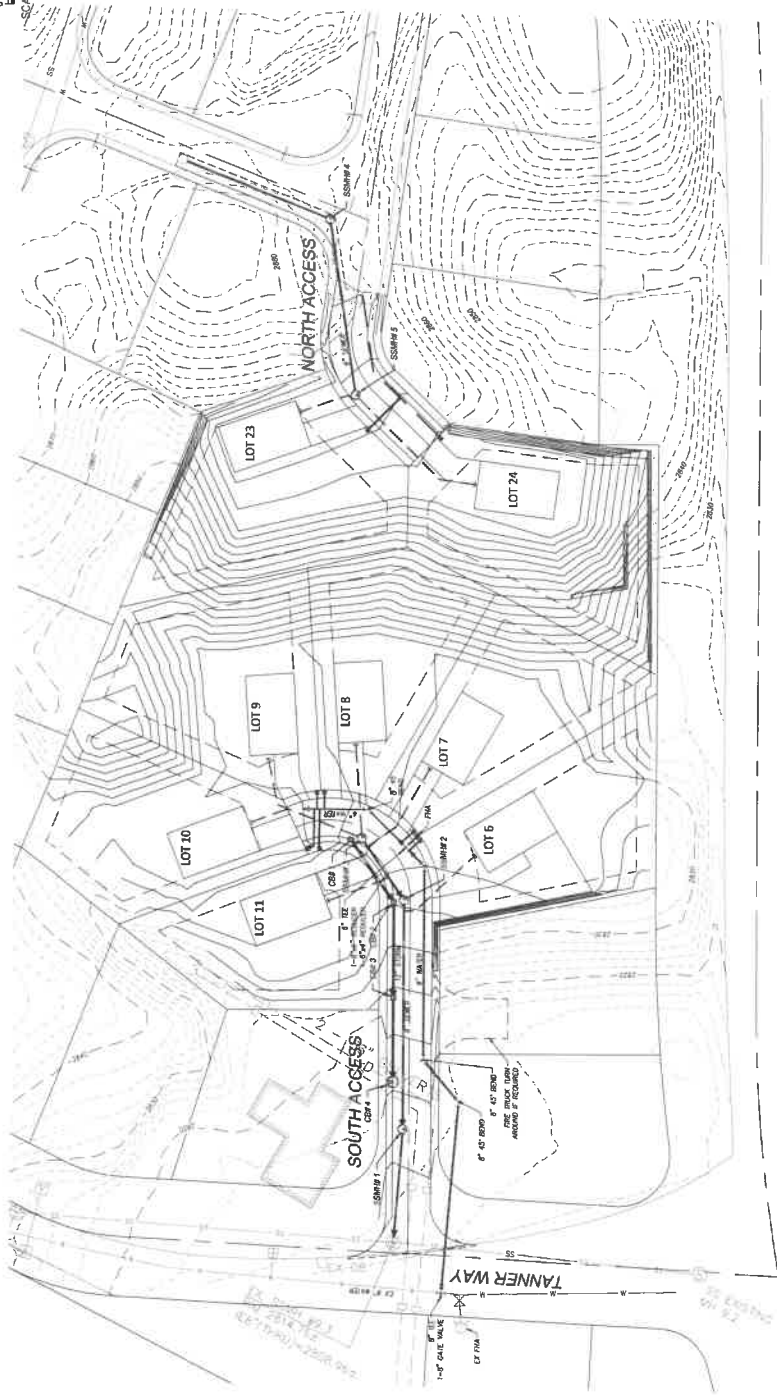


**SKI ACRES ESTATES LOTS 6-11, AND 23-24**  
 SW 1/4 OF SE 1/4 OF SECTION 9, T. 22 N., R. 11 E., W.M.  
 KITTITAS COUNTY, STATE OF WASHINGTON



REVISIONS

NO.	DATE	DESCRIPTION



SP/2/21  
**SKI ACRES ESTATES LOTS 6-11, AND 23-24**  
 CONCEPTUAL UTILITY PLAN  
 SNOPASS SF LOTS LLC

**Encompass**  
 ENGINEERING & SURVEYING  
 105 NE Juniper Street, Suite 201 • Bellingham, WA 98225 • Phone: (360) 791-0250  
 407 Steiner Blvd • Camano Island, WA 98282 • Phone: (509) 824-1433

ADVISOR	3/24/24
DATE	6/14/24
SCALE	AS SHOWN
PROJECT	LOT 6
DRAWN	JVF
CHECKED	CP
APPROVED	CP
PROJECT	6



Know what's below.  
 Call before you dig.

**KITTITAS COUNTY**  
 PUBLIC WORKS DEPARTMENT  
 THESE PLANS HAVE BEEN REVIEWED BY KITTITAS COUNTY DEPARTMENT OF PUBLIC WORKS AND FOUND TO BE IN ACCORDANCE WITH THE REQUIREMENTS OF KITTITAS COUNTY.  
 DIRECTOR OF PUBLIC WORKS \_\_\_\_\_ DATE \_\_\_\_\_